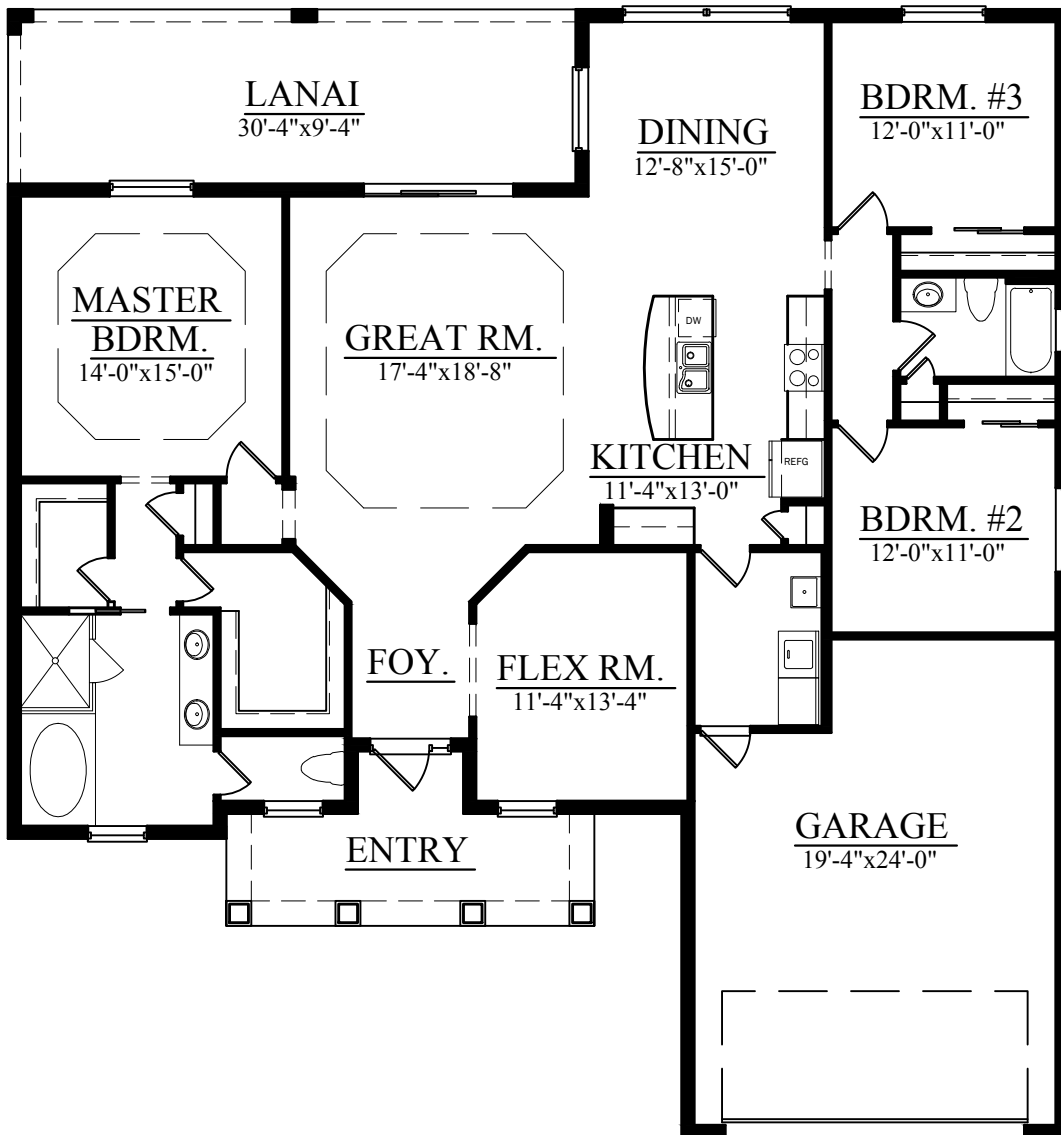


THE SHANNON 2000



LIVING AREA:	2,000 SQ. FT.	56'-8" WIDE x 60'-4" DEEP CEILING HEIGHT = 9'-4" WITH (2) TRAYS
GARAGE:	508 SQ. FT.	
ENTRY:	128 SQ. FT.	
LANAI:	283 SQ. FT.	
TOTAL:	2,919 SQ. FT.	