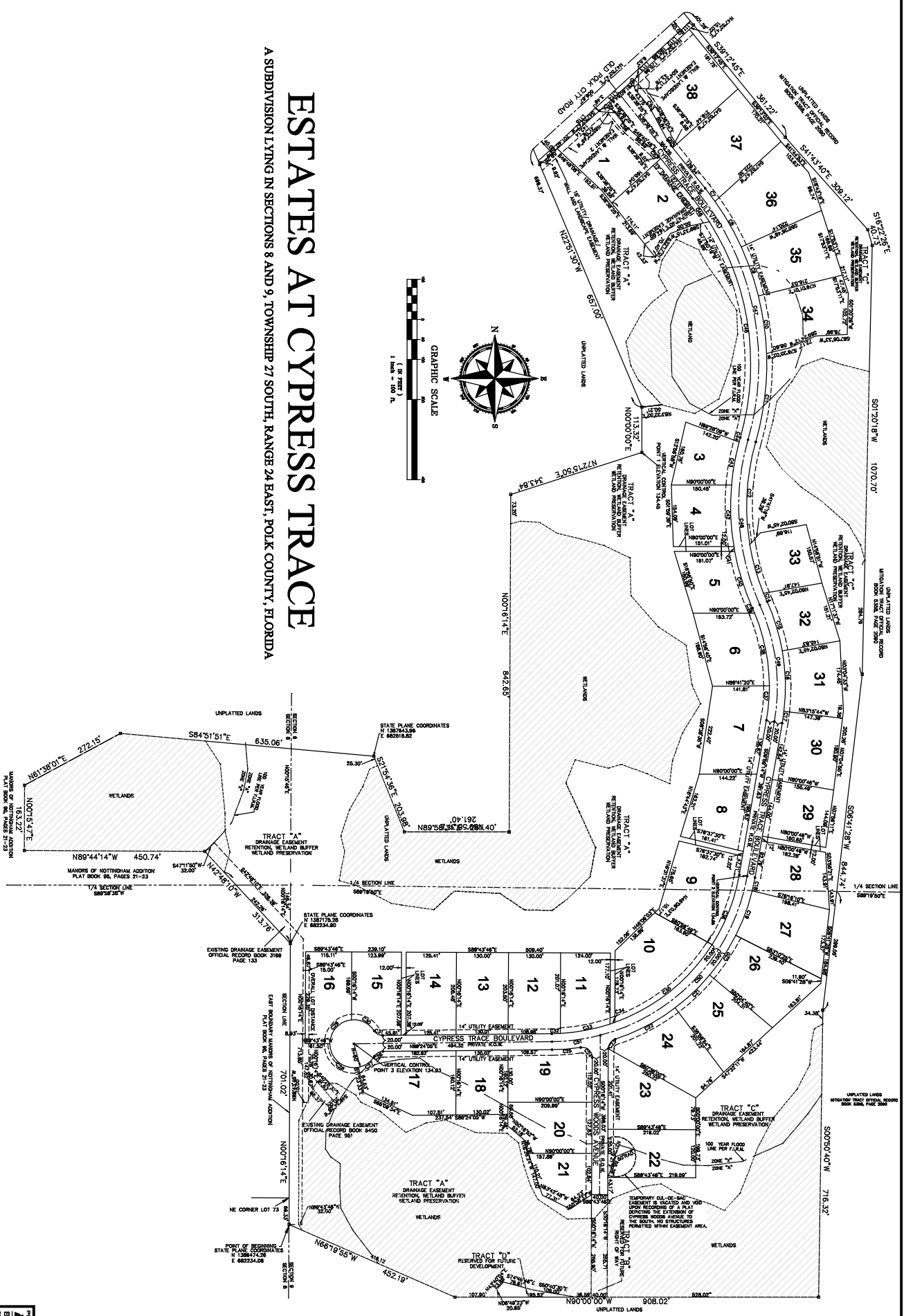
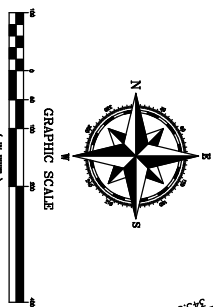


A SUBDIVISION LYING IN SECTIONS 8 AND 9, TOWNSHIP 27 SOUTH RANGE 24 EAST, POLK COUNTY, FLORIDA

# ESTATES AT CYPRESS TRACE



PREPARED BY  
**ALPHA**  
 ENGINEERING &  
 SURVEYING, INC.  
 6500 CHANCE DRIVE, SUITE 100  
 ORLANDO, FLORIDA 32817  
 (407) 244-4600 FAX (407) 244-4677