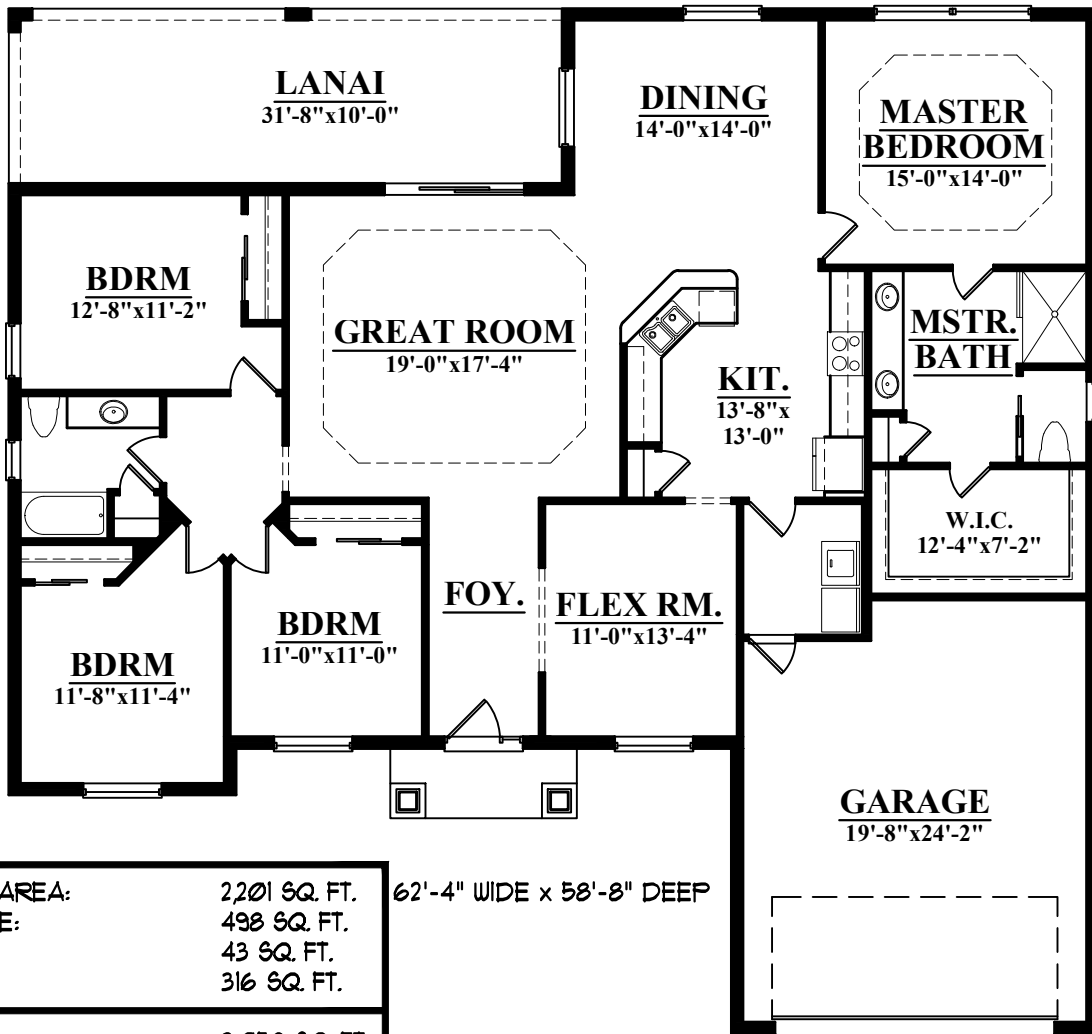


THE JANICE IV

2201



LIVING AREA:	2,201 SQ. FT.	62'-4" WIDE x 58'-8" DEEP
GARAGE:	498 SQ. FT.	
ENTRY:	43 SQ. FT.	
LANAI:	316 SQ. FT.	
TOTAL:	3,058 SQ. FT.	

