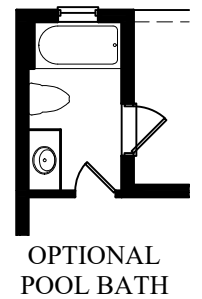
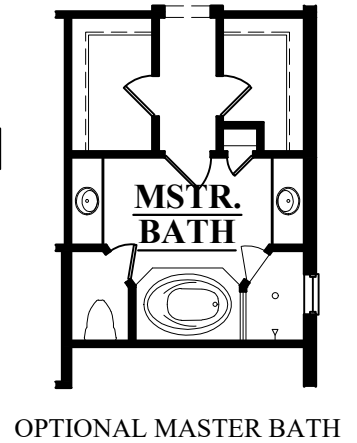
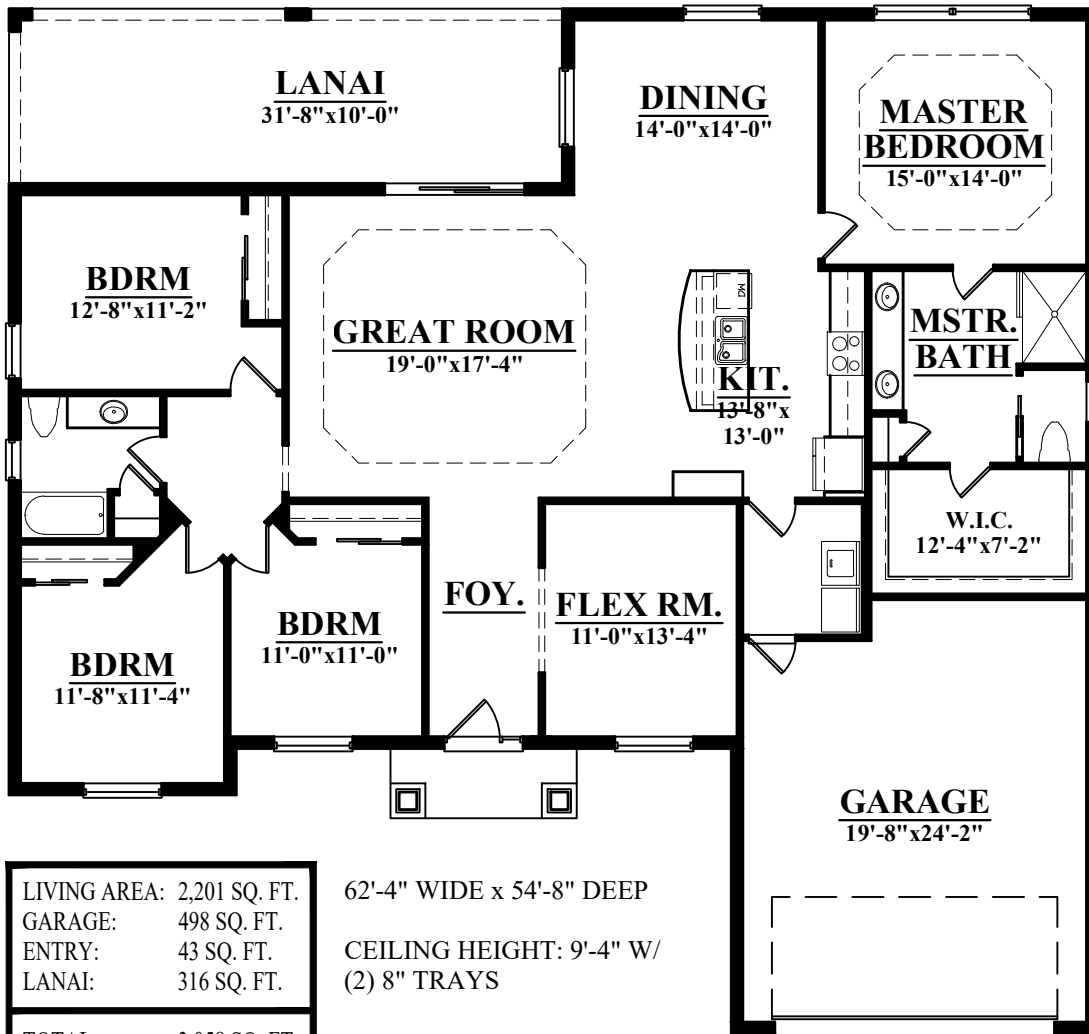


THE JANICE II

2201



LIVING AREA:	2,201 SQ. FT.
GARAGE:	498 SQ. FT.
ENTRY:	43 SQ. FT.
LANAI:	316 SQ. FT.
TOTAL:	3,058 SQ. FT.

62'-4" WIDE x 54'-8" DEEP
 CEILING HEIGHT: 9'-4" W/
 (2) 8" TRAYS

