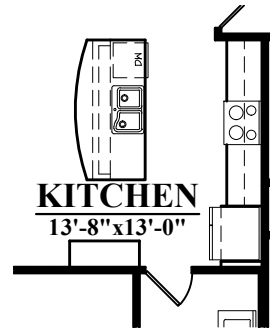
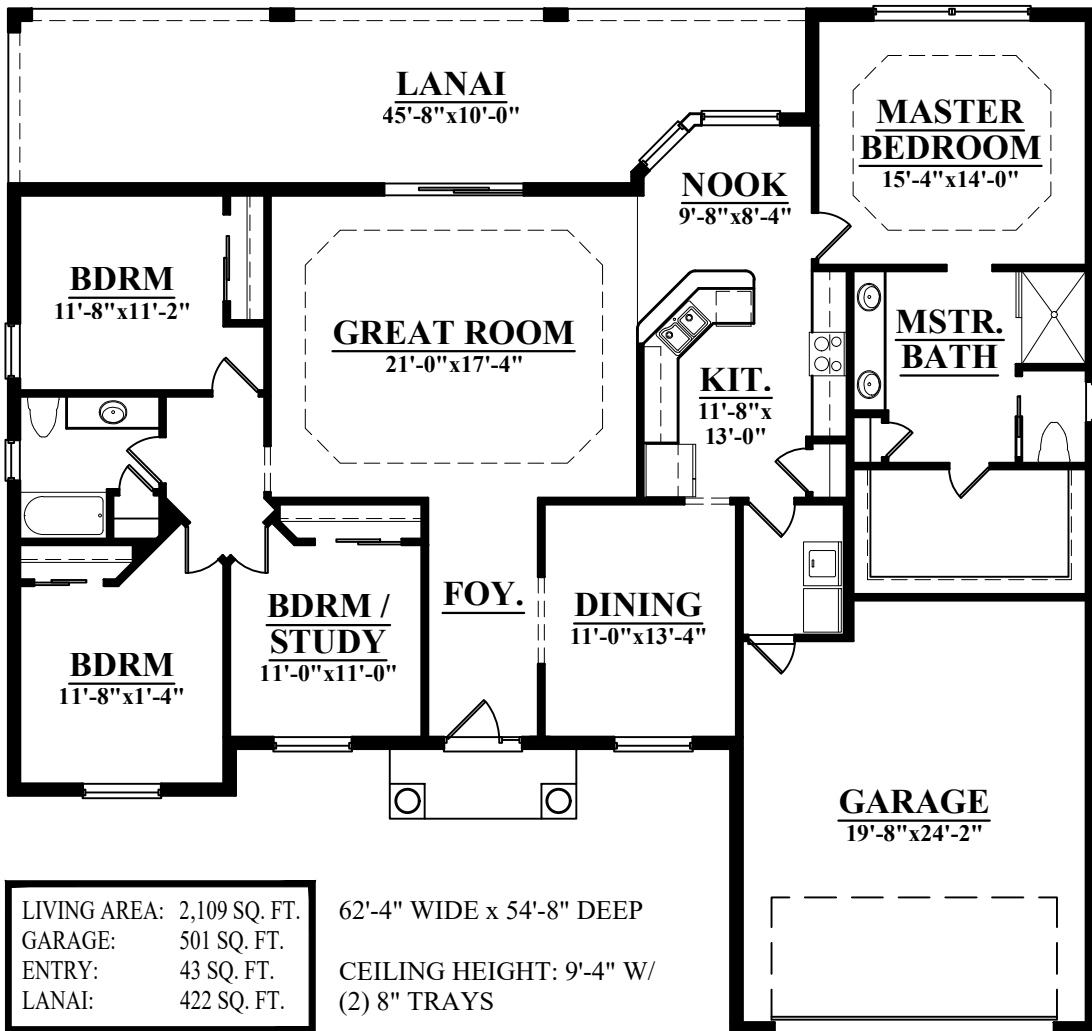
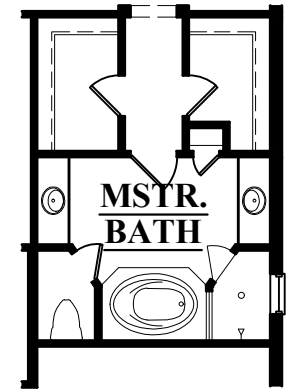


THE JANICE I

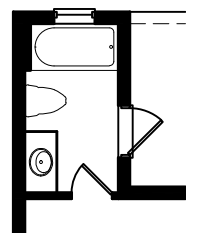
2109



OPTIONAL OPEN KITCHEN



OPTIONAL MASTER BATH



OPTIONAL POOL BATH

LIVING AREA:	2,109 SQ. FT.
GARAGE:	501 SQ. FT.
ENTRY:	43 SQ. FT.
LANAI:	422 SQ. FT.
TOTAL:	3,075 SQ. FT.

62'-4" WIDE x 54'-8" DEEP
 CEILING HEIGHT: 9'-4" W/
 (2) 8" TRAYS

